

## DesignCAD 3D Max 20.1 Release Notes

Nov. 9, 2010

DesignCAD 3D Max 20.1 introduces the following fixes and changes:

- DWG/DXF Export. Sometimes arcs and elliptical arcs, when exported to dwg or dxf format, would turn into their complementary arcs (ex. a 45 degree arc from 0 to 45 might turn into a 315 degree arc from 45 to 360).
- DWG/DXF Export. Some attribute values in blocks weren't exporting correctly.
- Large and Small Cursor step size are now available when the Snap Grid and Display Grid are on. *Note that for the Small Cursor Step to function when zoomed out, you may need to turn off the "Grid smoothly degrades when zoomed out" checkbox in Grid Options.*
- Added an "always reset to zero" option to the PointXYZ command to match other Point commands.
- LineStyle By Layer behavior has changed. In DesignCAD 20.0, you could (possibly accidentally) change a layer's assigned linestyle by changing the linestyle settings in the linestyle toolbar, if LineStyle By Layer was active. Now when LineStyle by Layer is active, most of the Linestyle toolbar controls are grayed out; in order to change a layer's assigned linestyle you must go use the Layer Options dialog box.
- Color By Layer behavior has changed. In DesignCAD 20.0 you could (possibly accidentally) change a layer's assigned color using the color toolbar, if Color By Layer was active. Now when Color by Layer is active, most of the color toolbar's controls are grayed out. In order to change a layer's assigned color you should use the Layer Options dialog box. *(Note: In this build it is still possible to re-assign the current layer's color using the Custom Color tool in the Color toolbar. This is not recommended, and will probably be disabled in future versions.)*
- Fixed a problem when trying to activate the Info Box via the sidebar tab; sometimes this would instead activate another application that was directly under the DesignCAD window.
- Cleaned up some display artifacts when using the Fillet command in 3D mode, or when deleting an entity from an exploded solid. Either situation often required a manual "Regenerate" command.
- Worked on improving selection speed for Select All and for selecting a different object when something is already selected.
- Fixed a problem with the New File Wizard – it was difficult to tell whether the "Select file from a list" or "New File" button was the active one.
- Added "Set View by Drawing Center" to commands available for Custom Toolbars.

- Solved some leader and text placement problems when drawing dimensions in 3D mode that weren't parallel to XY, ZY or XZ planes.
- Fixed a history problem with Zoom Previous. Once the number of zooms exceeded 200, the latest zoom information was being lost, instead of the earliest zoom information.
- Fixed an annoying scroll problem in Layer Options – when deleting a layer's contents sometimes the layer list would scroll unnecessarily.
- Made the new "scale prop" option in the Dimension commands "sticky", and on by default. This option, when checked, scales all other dimension features (arrowhead size, gap, etc.) proportionally when you change the dimension text size.
- When opening DesignCAD 18.0 or 18.1 files in a later version of DesignCAD, the text size, arrowhead size, and other features would be scaled wrong.
- Added a new command Solid/Pack Solid IDs. This reorders all solid ids consecutively starting from 1.
- Removed some inconsistent behavior that could occur when alternating between the Layer Toolbar and the Layer Options dialog box for controlling layer visibility or editability.

#### THE FOLLOWING CUSTOMIZATION ISSUES MAY ARISE WHEN UPDATING TO DesignCAD 20.1

- 1) SOME KEYBOARD SHORTCUTS MAY CEASE TO WORK. This should only happen if you have saved default keyboard settings from DesignCAD 20.0 or an earlier version. The reason is that some command ids have changed in 20.1 in order to avoid id conflicts with a library that we use.

If you aren't using special keys that you have set up manually, just open the Options command, activate the Keyboard tab, and choose Reset All, then Save As Default.

If you are using custom keyboard shortcuts, you will need to do the following:

a) Use the Keyboard Options dialog to open your custom key file (\*.dka or \*.dkf).

b) Save the key settings as an Ascii keyboard file (\*.dka).

c) open the dka file from (b) in a text editor (Notepad will work just fine). The first line in the file is a single number, which indicates how many key commands are listed. Each line after that consists of three values: a number representing the ctrl, alt, and shift settings, a number representing the key being used, and a command ID. Examine the command ID (third number) in each line. If the number is between 9000 and 9300, add 600 to it. For example, you would change this line

11,52,9157  
to  
11,52,9757  
(added 600 to the original value 9157)

However, this line  
15,52,10561  
should not be changed, because the command id is not between 9000 and 9300.

d) After changing all the commands that are in the specified range, save the changes. If you are using Notepad, be sure to choose the "All files (\*.\*)" setting in the Save As Type option, or the extension will get changed.

e) Load the modified .kba file via Keyboard Options, and Save as Default.

- 2) SOME MENU COMMANDS MAY CEASE TO WORK. This should only happen if you have modified the menu, are using a custom menu supplied by a 3<sup>rd</sup>-party distributor, or have saved a default version of the menu file.

If you aren't intentionally using a modified menu, just open the Options dialog, select the Menu tab, and choose Reset, then Save as Default.

If you are using a customized version of the menu, make these changes:

a) Open the Menu Options tab.

b) Click on "Save Menu File", and save the menu file to an ascii menu file.

c) Open the ascii menu file (\*.dma) from step (b) in a text editor

d) We are only interested in the lines of this format:

```
MENUITEM "command name\tooltipttext",      number
```

look for lines where the number is between 9000 and 9300. Add 600 to the number in those lines, but don't change anything else on the line. For example, we'd change this line:

```
MENUITEM "Sa&ve a Copy...",      9041
```

to

```
MENUITEM "Sa&ve a Copy...",      9641
```

e) Save the dma file. Make sure, if you're using Notepad, that it doesn't save it with a .txt extension.

f) Use "Load Menu File" in Menu Options to re-load the modified menu, and then choose "Save as Default".

3) SOME CUSTOM TOOLBAR BUTTONS MAY CEASE TO WORK.

To fix this problem:

a) open each .dct file in a text editor.

b) Check all "HotToolCmd(number)=(CommandID) lines. Any time you see a (CommandID) value that is between 9000 and 9299, add 600 to the command id.

For example, you would change this line:

```
HotToolCmd3=9031
```

to

```
HotToolCmd3=9631
```

c) Save the modified .dct file. Make sure your editor doesn't try to change the extension.

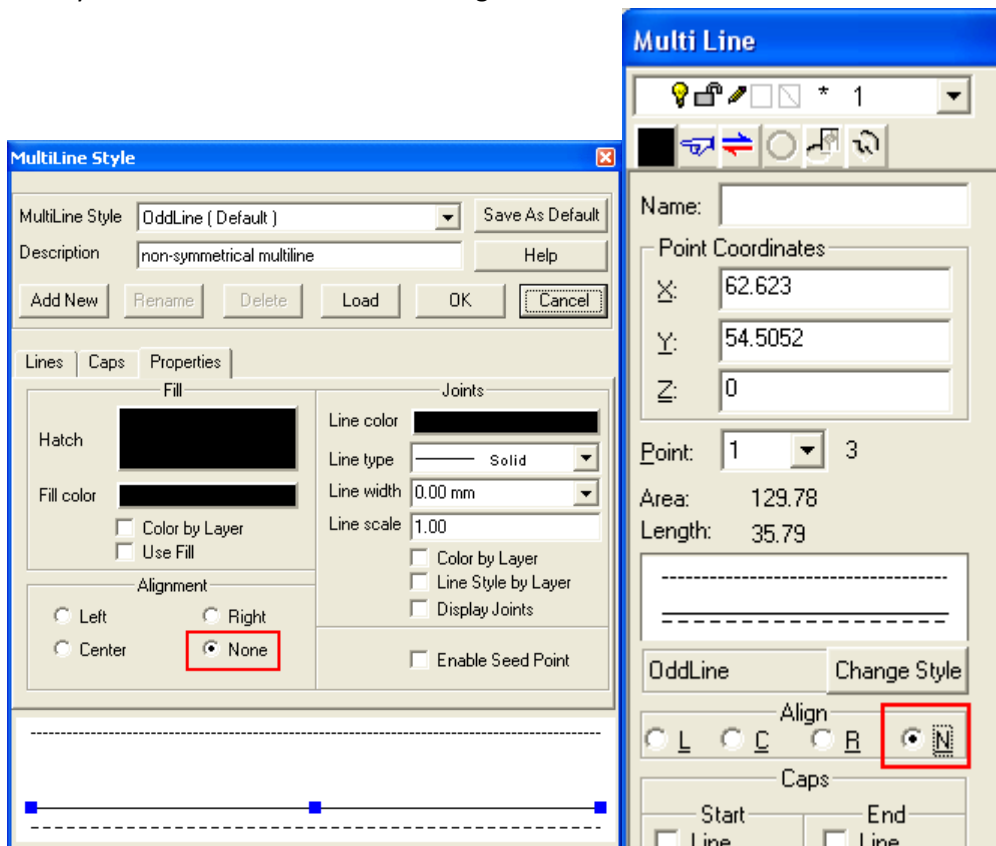
d) After changing all your .dct files, restart DesignCAD.

## DesignCAD 3D Max 20.0 Release Notes

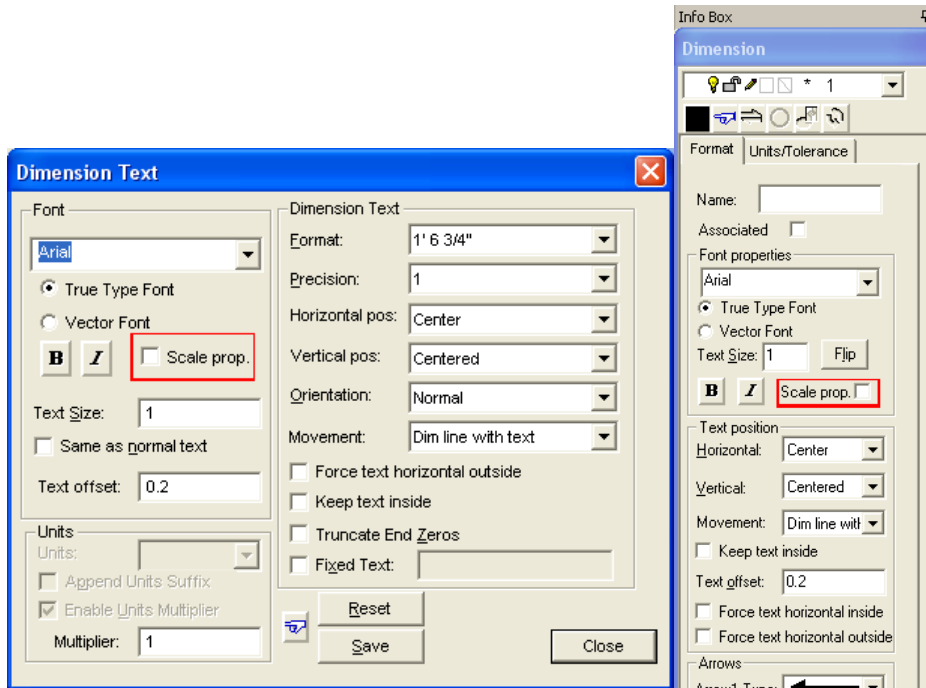
Jan. 29, 2010

DesignCAD 3D Max 20 offers the following new features:

- A new “Automatically toggle by layer settings” checkbox in the Layer Options tab allows you to choose whether switching to a new layer automatically sets or clears the Linestyle By Layer and/or Color By Layer flags.
- We have added a new Drawing Compare command to the Tools menu. This tool performs a visual comparison of two drawings and highlights the differences.
- Added a Pack Group IDs command (Tools/Groups/Pack Group IDs). This command sorts and rearranges all group IDs so that they are numbered consecutively from 1 to the number of groups present in the drawing.
- A new “None” alignment option has been added for Multiline styles. This allows you to align non-symmetrical multiline entities along their bases.



- BasicCAD additions:  
Sys(1150) – Turn “Show Command Dialog” off or on.  
Sys(1151) -- Controls automatic toggle of by layer settings. 0 = toggle, 1 = don't toggle.
- Added an option to scale all dimension properties proportionally when changing the text size, either in the Dimension command or in a dimension entity's Info Box. Other measurements can still be changed individually.



- Added an “Ignore view shading flags” option the File/Open command to skip shading or hidden line removal even if views were saved with those features turned on. This can save time when loading large 3D files.
- Added a “Display geometry on top of images” option to the View Options tab. With this flag checked, images will always be drawn first in the display order, and other geometry will appear on top of them. This will be helpful when tracing lines over images.

#### Fixes and improvements:

- Removed an annoying screen flicker when the Show Command Dialog option was turned off.
- There has been a change to the by layer flag switching when changing layers. Before, if you switched to layer with only a set linestyle, the Linestyle by Layer flag would be set. If you then switched to a layer with a set color, the Color By Layer flag would be set, but the Linestyle By Layer flag would not be cleared. Switching to a layer with neither a set color nor linestyle would not clear either By Layer flag. Now, if “Automatically toggle bylayer settings” is checked, both By

Layer flags are updated to match the presets in the current layer – neither, color only, linestyle only, or both.

- There has been a change to the layer behavior of nested groups. Now, when you create a group with “Don’t use nested groups” unchecked, the group’s layer has no effect on the visibility of objects inside the group. Consequently we have removed the “Group Layers visibility controlled by Group Host Layer” checkbox from the View Options tab.
- The Intersect-2 and Trim One Line commands are improved to better work with lines and circles.
- Added an “Always reset to zero” option to PointXYZ for consistency with other point commands.
- Changed some default settings: Layer toolbar and Layer Options now lists all layers by default; Running Snaps defaults to Off; Interruptible Snaps defaults to On.
- Changed Tab order for Rotate command so that Angle is the first field highlighted.
- Fixed a problem where DX, DY, and DZ weren’t updating if a line started from 0, 0, 0.
- Fixed a problem with dimensions shifting position after the origin was changed.
- Fixed the Force Text Horizontal option for dimensions; in version 19 it didn’t work when dimensioning an exactly-vertical measurement.
- Fixed a problem when saving drawings with dimensions to older version formats. The dimensions were visible in the older version of DesignCAD (after saving the file in that version’s format), but editing them could cause a crash or could corrupt the dimension itself.
- Made it easier to select dimensions. In Version 19 you had to click very carefully to select a dimension.
- Made it possible for the user to choose both arrowhead styles for progressive dimensions.
- Cleaned up some display artifacts left behind after drawing dimensions.
- Fixed problem where editing dimensions on a non-white background left display artifacts and required a Regenerate.
- Changed the Refresh tool in the toolbar to Regenerate. Refresh wasn’t having any visible effect most of the time.
- Added an “Auto” option for Dimension Arrowhead placement.
- Disabled “Add Leader” and “No Leader” options for Coordinate dimensions
- Fixed the Bounding Box algorithm for wide lines. Previously the Info Box, and bounding box-related Sys() functions, would return wrong values for wide lines.
- Fixed wide lines in Paperspace view frames. In version 19, wide lines in a view frame would print much too wide, sometimes blacking out the entire view frame.
- When importing a non-native file (such as Dwg or Dxf) into a blank drawing, the drawing’s title change to match that of the drawing being imported.
- When a drawing is “dirty” and needs to be saved, this is now indicated by an asterisk in each of the view titles.
- The Reverse Points tool in the Info Box didn’t work for Multilines. Now it does.
- Changed the appearance of the Move Layer Up/Down buttons in the Layer Options tab so they don’t look like scrollbars. Also added tooltips to these buttons.
- Circle Tangent to Two Lines, when the “Draw as Line” option was checked, always displayed the number of segments as 20, regardless of the actual setting.

- Symbols that contained wide lines, when exploded, were improperly being offset along the Z axis by the line width. This will no longer occur for symbols created in Version 20, but older symbols will continue to exhibit this problem.
- Fixed a problem where, if the dimension text wouldn't fit between the extension lines, it was placed so that it overlapped the right-hand extension line. Now the text is placed all the way to the right of the extension line in this case.