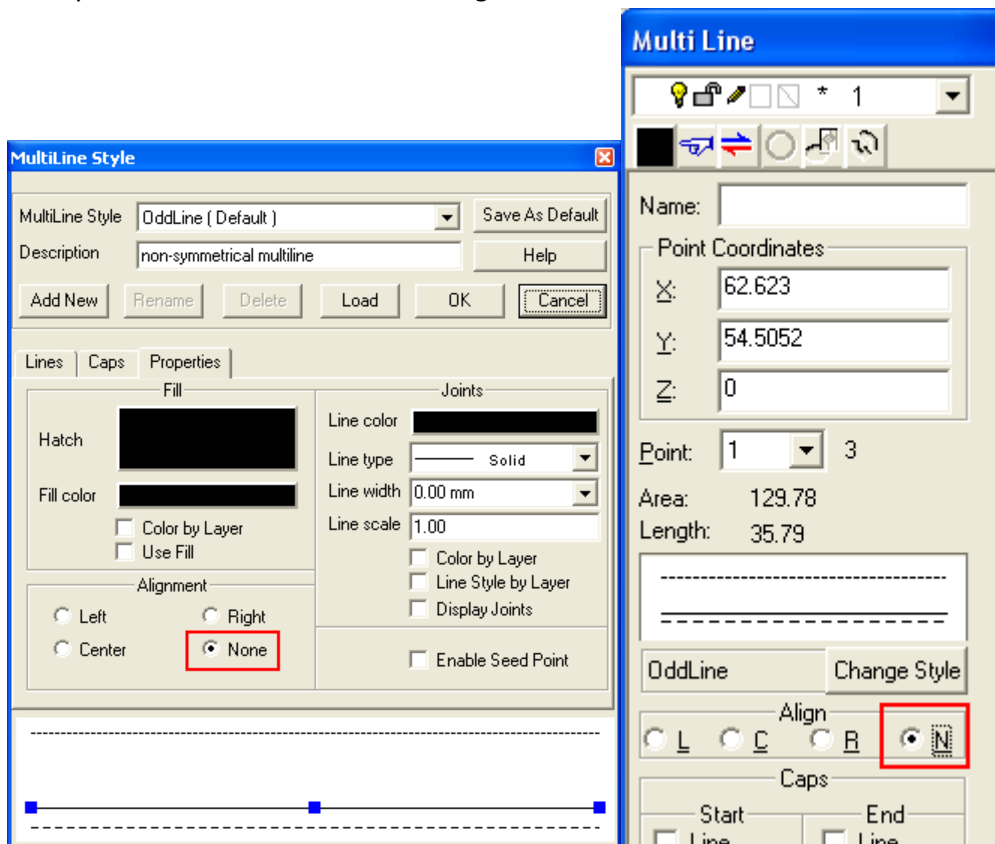


DesignCAD 20.0 Release Notes

Feb. 8, 2010

DesignCAD 20 offers the following new features:

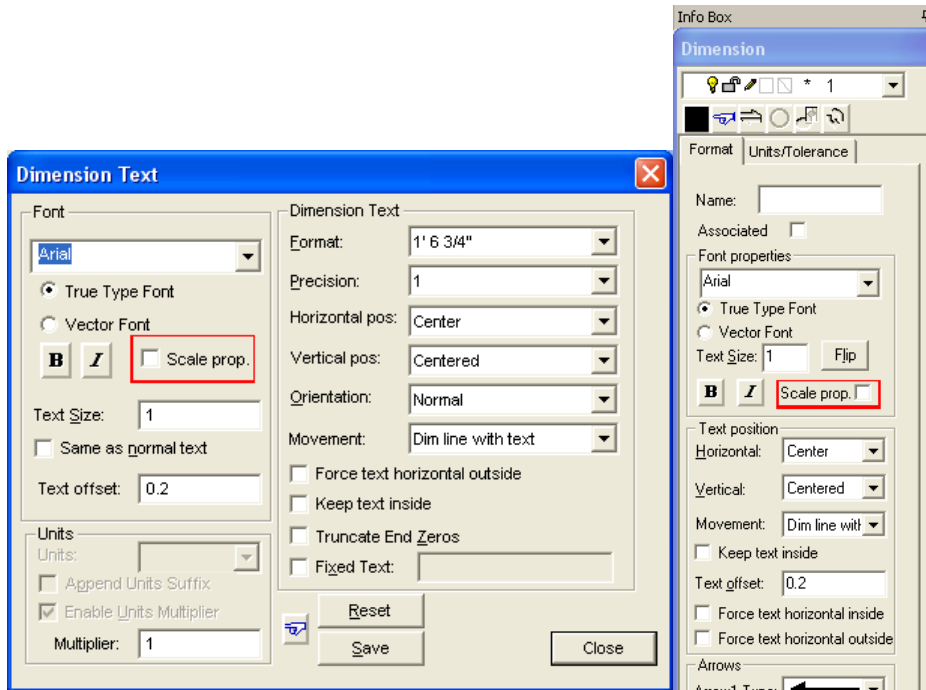
- A new “Automatically toggle by layer settings” checkbox in the Layer Options tab allows you to choose whether switching to a new layer automatically sets or clears the Linestyle By Layer and/or Color By Layer flags.
- Added a Pack Group IDs command (Tools/Groups/Pack Group IDs). This command sorts and rearranges all group IDs so that they are numbered consecutively from 1 to the number of groups present in the drawing.
- A new “None” alignment option has been added for Multiline styles. This allows you to align non-symmetrical multiline entities along their bases.



- BasicCAD additions:
Sys(1150) – Turn “Show Command Dialog” off or on.

Sys(1151) -- Controls automatic toggle of by layer settings. 0 = toggle, 1 = don't toggle.

- Added an option to scale all dimension properties proportionally when changing the text size, either in the Dimension command or in a dimension entity's Info Box. Other measurements can still be changed individually.



- Added a “Display geometry on top of images” option to the View Options tab. With this flag checked, images will always be drawn first in the display order, and other geometry will appear on top of them. This will be helpful when tracing lines over images.

Fixes and improvements:

- Removed an annoying screen flicker when the Show Command Dialog option was turned off.
- There has been a change to the by layer flag switching when changing layers. Before, if you switched to layer with only a set linestyle, the Linestyle by Layer flag would be set. If you then switched to a layer with a set color, the Color By Layer flag would be set, but the Linestyle By Layer flag would not be cleared. Switching to a layer with neither a set color nor linestyle would never clear either By Layer flag. Now, if “Automatically toggle bylayer settings” is checked, both By Layer flags are updated to match the presets in the current layer – neither, color only, linestyle only, or both.
- There has been a change to the layer behavior of nested groups. Now, when you create a group with “Don't use nested groups” unchecked, the group's layer has no effect on the visibility of objects inside the group. Consequently we have removed the “Group Layers visibility controlled by Group Host Layer” checkbox from the View Options tab.

- The Intersect-2 and Trim One Line commands are improved to better work with lines and circles.
- Added an “Always reset to zero” option to PointXYZ for consistency with other point commands.
- Changed some default settings: Layer toolbar and Layer Options now lists all layers by default; Running Snaps defaults to Off; Interruptible Snaps defaults to On.
- Changed Tab order for Rotate command so that Angle is the first field highlighted.
- Fixed a problem where DX and DY weren’t updating if a line started from 0, 0, 0.
- Fixed a problem with dimensions shifting position after the origin was changed.
- Fixed the Force Text Horizontal option for dimensions; in version 19 it didn’t work when dimensioning an exactly-vertical measurement.
- Fixed a problem when saving drawings with dimensions to older version formats. The dimensions were visible in the older version of DesignCAD (after saving the file in that version’s format), but editing them could cause a crash or could corrupt the dimension itself.
- Made it easier to select dimensions. In Version 19 you had to click very carefully to select a dimension.
- Made it possible for the user to choose both arrowhead styles for progressive dimensions.
- Cleaned up some display artifacts left behind after drawing dimensions.
- Fixed problem where editing dimensions on a non-white background left display artifacts and required a Regenerate.
- Added an “Auto” option for Dimension Arrowhead placement.
- Disabled “Add Leader” and “No Leader” options for Coordinate dimensions
- Fixed the Bounding Box algorithm for wide lines. Previously the Info Box, and bounding box-related Sys() functions, would return wrong values for wide lines.
- Fixed wide lines in Paperspace view frames. In version 19, wide lines in a view frame would print much too wide, sometimes blacking out the entire view frame.
- When importing a non-native file (such as Dwg or Dxf) into a blank drawing, the drawing’s title change to match that of the drawing being imported.
- When a drawing is “dirty” and needs to be saved, this is now indicated by an asterisk in each of the view titles.
- The Reverse Points tool in the Info Box didn’t work for Multilines. Now it does.
- Changed the appearance of the Move Layer Up/Down buttons in the Layer Options tab so they don’t look like scrollbars. Also added tooltips to these buttons.
- Circle Tangent to Two Lines, when the “Draw as Line” option was checked, always displayed the number of segments as 20, regardless of the actual setting.
- Symbols that contained wide lines, when exploded, were improperly being offset along the Z axis by the line width. This will no longer occur for symbols created in Version 20, but older symbols will continue to exhibit this problem.
- Fixed a problem where, if the dimension text wouldn’t fit between the extension lines, it was placed so that it overlapped the right-hand extension line. Now the text is placed all the way to the right of the extension line in this case.