

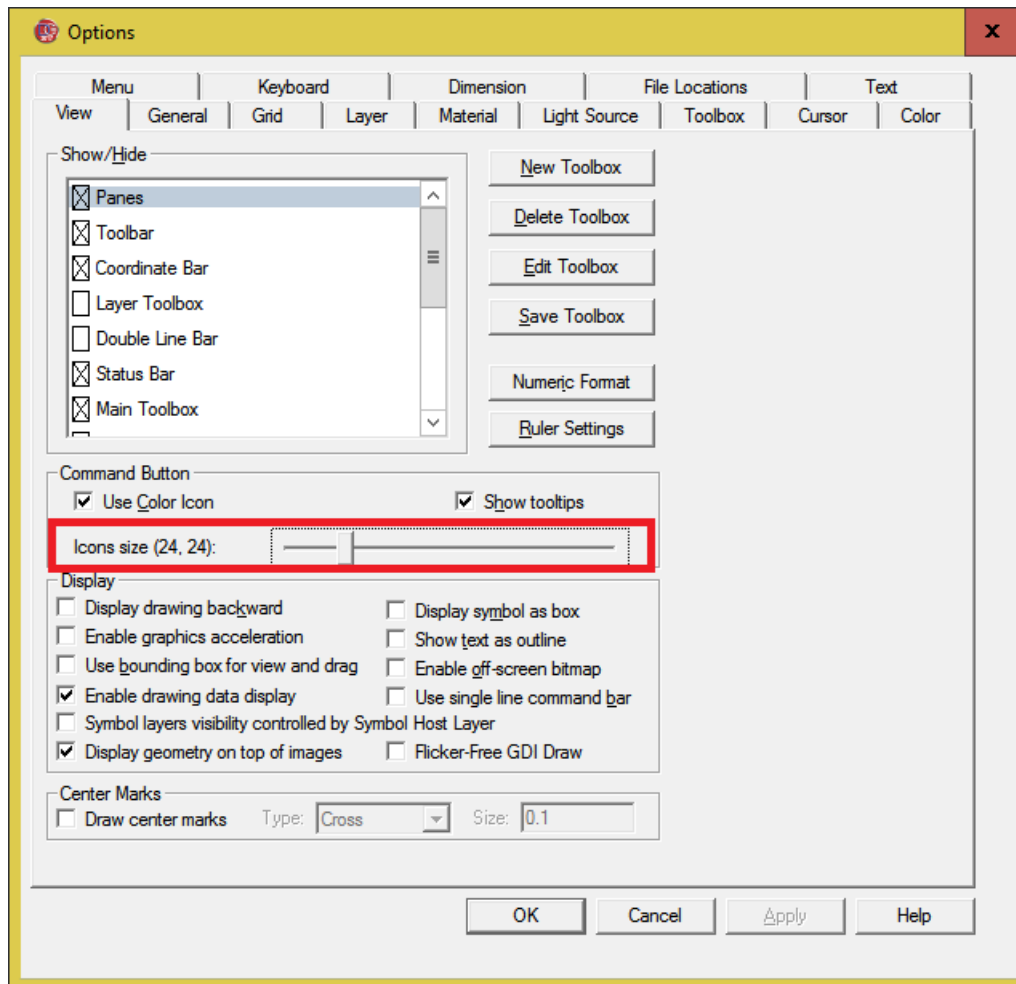
DesignCAD 2D 2018 Release Notes

Oct 30, 2017

DesignCAD 2D 2018 (internal version number 27) has the following improvements.

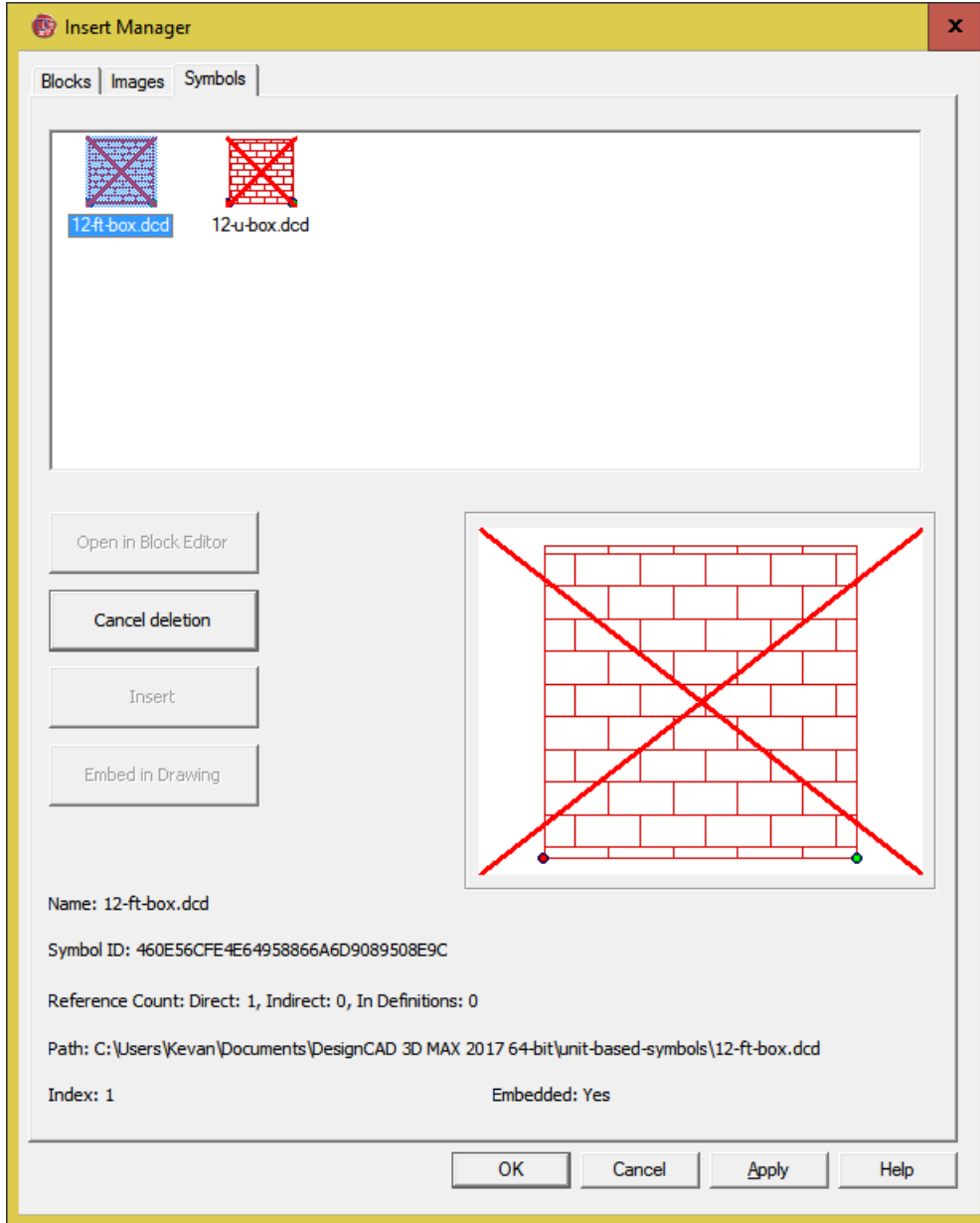
Icon Scaling

Previous versions only had two icon sizes available – 16-pixel and 24-pixel icons. With super-high-resolution screens becoming more and more common, we found that even the 24-pixel icons were not large enough to be easily visible on many displays. DesignCAD 2018 introduces an icon size slider in the View Options panel; here you can select an icon size between 16 and 64 pixels, in 8-pixel steps. Note that changing the size of the icons may cause your toolbars to get rearranged – you may have to manually drag some toolbars back to their previous locations after resizing the icons.



Insert Manager Improvements

Now when you choose to delete a symbol, image, or block from the Insert Manager, the result is not finalized until you click the Apply button. The objects marked for deletion can be clearly identified by a red 'X' across the item. In the image below, two symbols have been marked for deletion, but not yet deleted from the drawing.



When any item is marked for deletion, selecting it in the top preview panel changes the 'Delete' button's caption to 'Cancel Deletion'. Clicking 'Cancel Deletion' will clear the deletion flag on that item. Clicking 'Cancel' at the bottom of the Insert Manager dialog will cancel all pending deletions and close the Insert Manager. Clicking 'Apply' will process all pending deletions and leave the Insert Manager open. Clicking 'OK' will process all pending deletions and close the Insert Manager.

New Text Option: Dynamic Scaling

The Text command now offers a new option – Dynamic Scaling. In previous versions, when drawing 2D text, it was always drawn at the specified height, and if you set a second point, it controlled only the angle of the text.

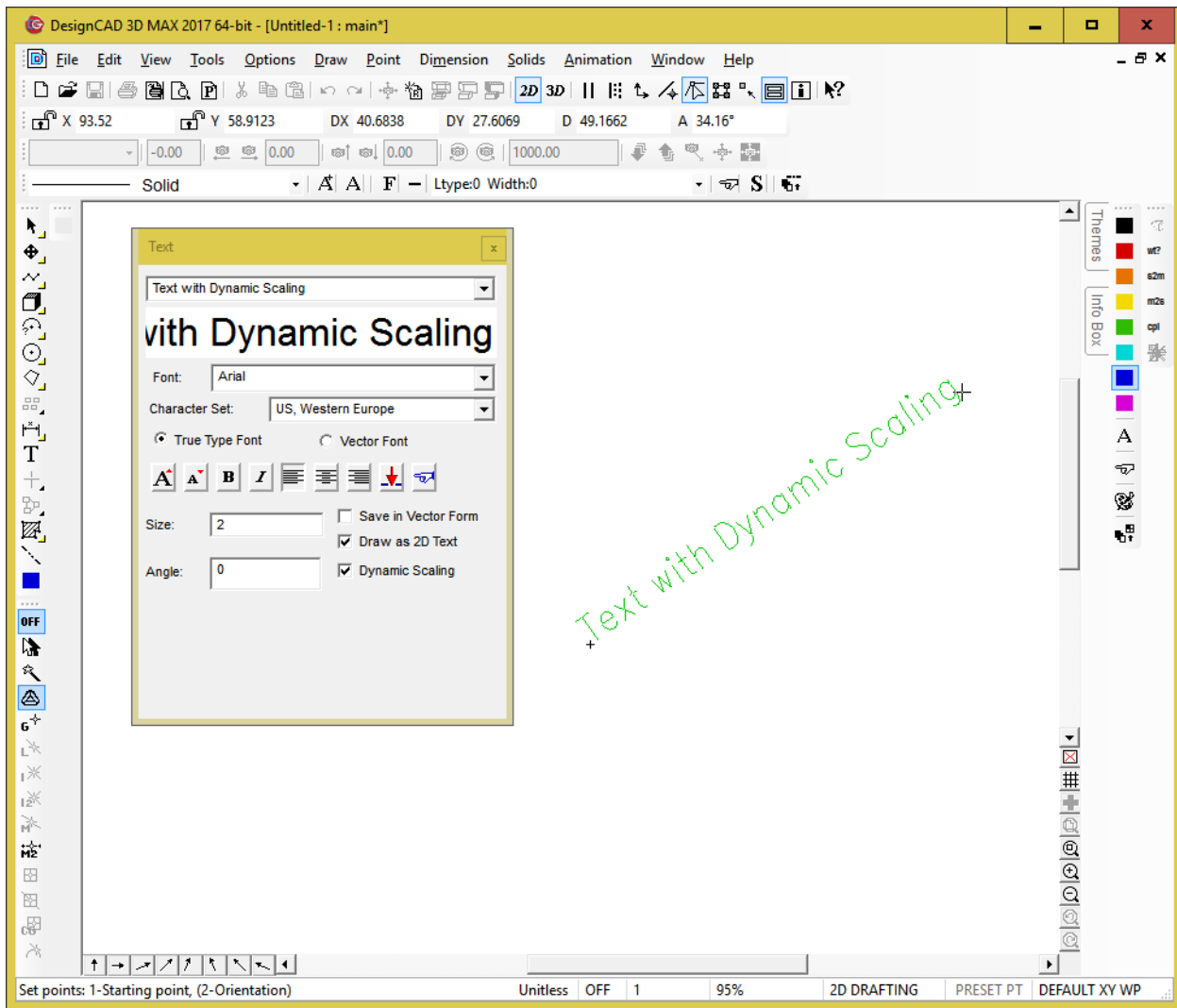
On the other hand, if you set more than one point for 3D text, the second point controlled both the angle and the length of the text (with height adjusted proportionately). Setting 3 or four points caused the text to be distorted into interesting shapes.

The new option makes these commands more consistent with one another.

2D Text – with Dynamic Scaling off, it works as it always has – the first point sets the lower left corner, and the optional second point controls the angle, with the height being specified by the 'Size' field in the dialog box. With Dynamic Scaling on, the optional second point sets both the angle and the length of the text, with the height being adjusted proportionally to the length (very much the same way as the Move command works on selected 2D text).

This option can be specified in BasicCAD text commands via the <DynamicScale parameter (0 = off, 1=on). For example:

```
>Text2D
{
    <DynamicScale 1
    <Pointxyz 0, 0, 0
    <Pointxyz 12, 0, 0
    <Text "Dynamically-scaled text"
}
```



New command: Control Curve

The new Control Curve command draws a Nurb curve, whose shape is controlled by a 'cage' of control points. The curve can be selected to follow a quadratic or cubic rule; quadratic curves conform to the cage more closely than their cubic counterparts (i.e. cubic curves bend more 'stiffly' than quadratics).

As with the classic Curve command, a duplicate vertex in the cage polygon causes a sharp break in a quadratic control curve, or a much tighter bend in a cubic control curve.

This command is accessible via BasicCAD through the >ControlCurve command. You can specify whether the curve is Quadratic or Cubic via the <Cubic n parameter, where n=0 gives a quadratic result, and n=1 gives a cubic result. Here is a simple example:

```
>ControlCurve
{
    <Type 0 'normal, not vectorized
```

```

<Cubic 1 'cubic variation of curve
<PointXYZ 0, 0, 0
<PointXYZ 10, 0, 0
<PointXYZ 10, 10, 0
<Pointxyx 5, 15, 0
<Pointxyz 5, 15, 0 'sharp bend
<PointXYZ 0, 10, 0
<PointXYZ 0, 0, 0

```

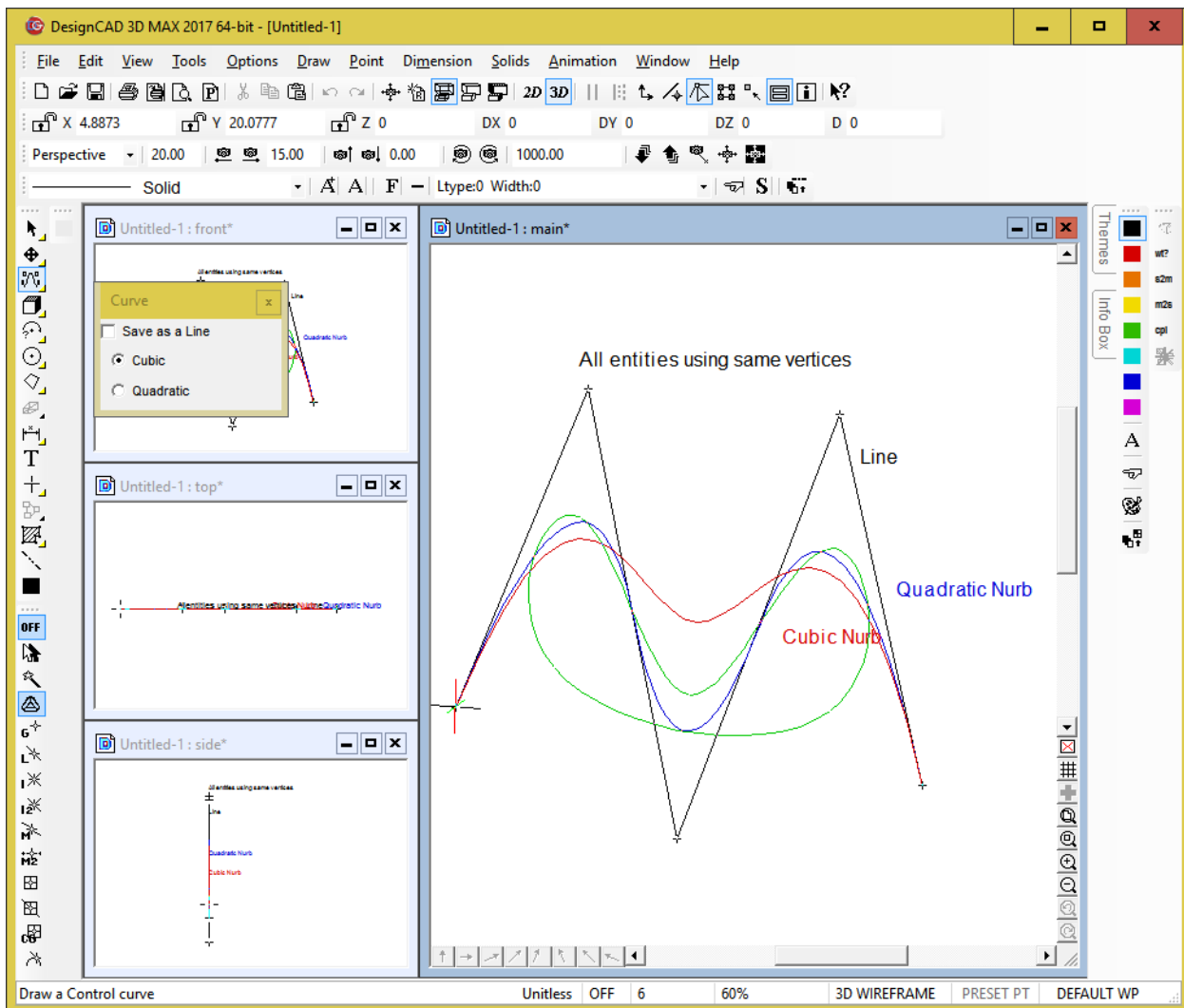
```

}

```

We have also added the Query Parameter ENT_NURBTTYPE to indicate (or change) a control curves type (cubic = 1, quadratic = 0).

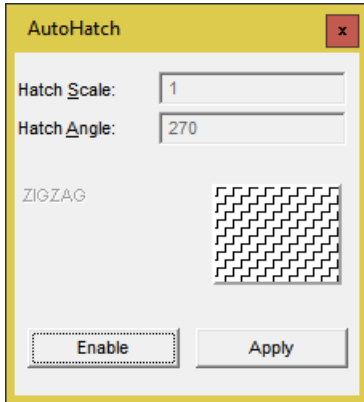
Alias ENT_NURBTTYPE &H011C 'R/W - i (0=quadratic, 1=cubic)'



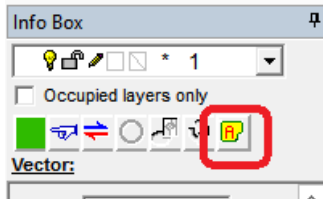
New Command: AutoHatch Settings

For simple 2D vector shapes (circles, arcs, curves, planes, lines) we have added the capability to draw them automatically filled with a hatch pattern. For non-closed shapes (such as a semicircle, or a 2-segment line that forms two legs of a triangle), the fill pattern is bounded by the imaginary line between the starting and ending points of the shape.

Use the **Options/AutoHatch Settings** command to specify the currently-active fill pattern to use on new objects. The use of the fill pattern can be enabled or disabled here as well.

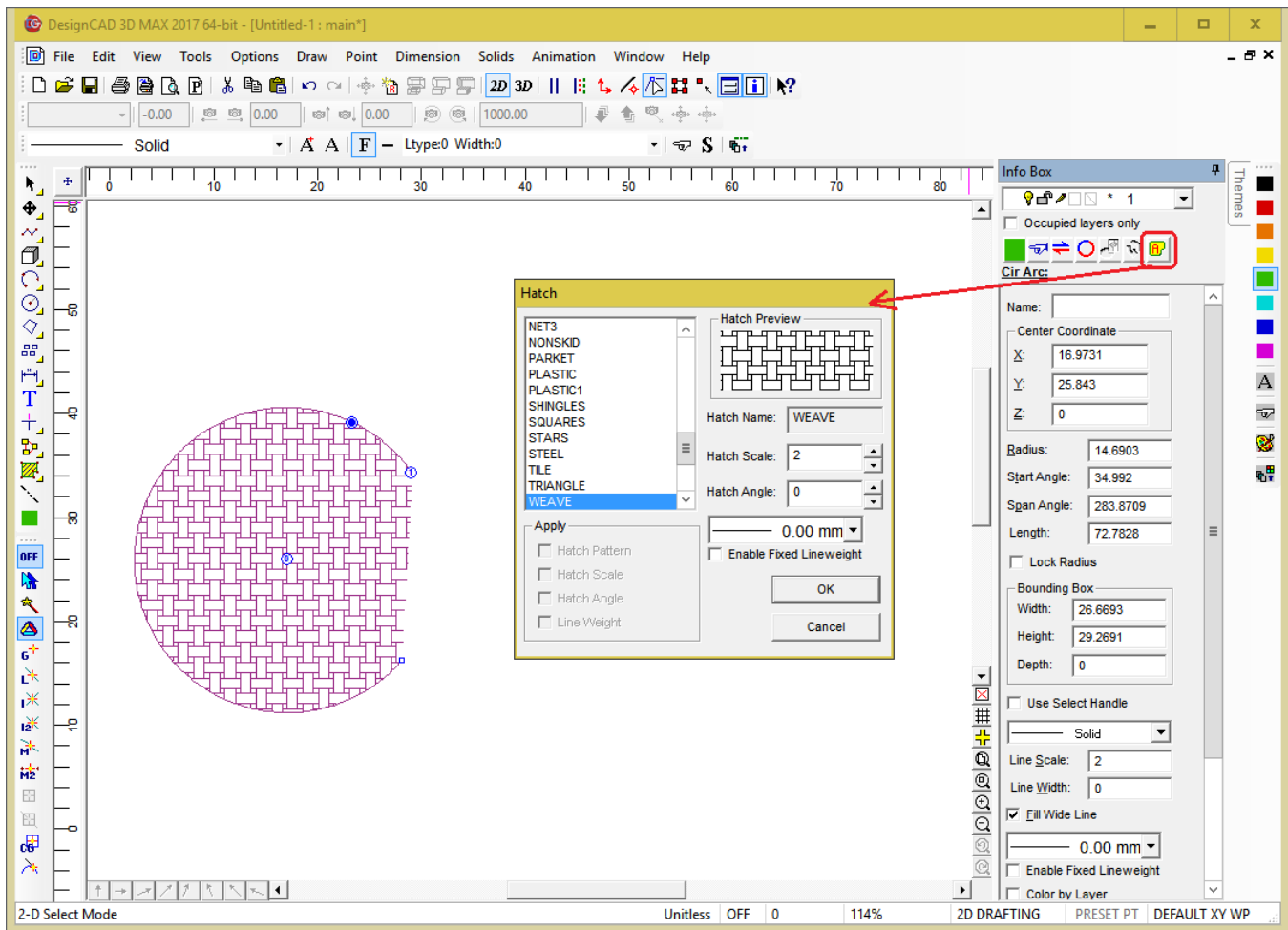


To specify a fill pattern, click the 'Enable' button, then click on the hatch preview thumbnail to select the desired pattern. Finally, click 'Apply' to make the new setting active. Now any new vector objects will be automatically filled with the specified hatch pattern. To turn off the fill again, re-run the command and click 'Disable', then 'Apply'.



To modify the fill pattern on an existing object, select the object and open the Info Box. The rightmost icon in the toolbar at the top of the Info Box allows you to specify the fill pattern for the selected entity.

In the image below, an arc has been selected, and the 'AutoHatch Settings' icon in the Info box has been clicked.



To assign the same AutoHatch fill pattern to multiple entities, select them all, then open the Info Box and click on the 'Show Detail' button. Modify the Fill pattern of any selected object, and all selected objects will update to match it.

At this time, Gradient and Bitmap fill patterns are not supported. Also, there is currently no way to specify a separate fill color – it will have the same color as the entity being filled. If you want a different color, you'll need to set the Fill pattern to 'None' and use Hatch Line or Hatch Fill to create a separate Hatch entity in the desired color.

The Fill property is not currently accessible from BasicCAD or OLE Automation. This support will be added at a later time.

New Command: Arc Tangent to Two Lines

We have added a new command Arc Tangent to Two Lines. This command lets you draw an arc of a specified radius that is tangent to two specified lines. It works much like the Fillet command, except that it doesn't make any changes to the two lines.

This command is also available through BasicCAD via the >Arc7 command. Here is a sample macro that draws two lines, then an arc tangent to both lines with a radius of 7.

```
>Line
{
  <PointXYZ 9.5,34,0
  <PointXYZ 19,12.5,0
}
```

```
>Line
{
  <PointXYZ 27,37,0
  <PointXYZ 25,12,0
}
```

```
>Arc7
{
  <PointXYZ 17,16,0
  <PointXYZ 26,18,0
  <Radius 7
}
```

AutoCAD 2018 Import/Export support

DesignCAD 3D Max 2018 can now import and export dwg and dxf files in AutoCAD 2018 format. Previously attempting to Import an AutoCAD 2018 file would simply result in a 'Command failed' message, and there was no Export option for exporting to AutoCAD 2018 format.

Other improvements:

- We resized the Selection Filter command's Color panel so that the RGB values of all colors can be fully displayed; previously they would sometimes be cut off at the right end by the vertical scrollbar.
- We updated the 'Save As' options to include more recent versions of DesignCAD; now you can save a drawing from DesignCAD 2018 that is fully compatible with DesignCAD 2016, 25, 24, 21-23, 19-20, 18, 17, 16, 15, 14, 13, 12, DesignCAD 3000, DesignCAD 2000, or DesignCAD 97. If you plan to send a drawing from the current version of DesignCAD to someone using an older version, it is always a good idea to use Save As to save a copy of your drawing specifically for use with their version of DesignCAD; otherwise the newer-format drawing may not load completely in their older version.
- We fixed a problem with Purge Unused Blocks; previously it was eliminating all symbols-by-reference instead of checking whether they were in use or not.
- We fixed a problem with the Info Box's reported scale of symbols and blocks that were created with different units of measurement than the host drawing.
- A drawing file's date and time no longer change to the current date and time after re-opening the drawing.

- When saving image files, the last-used graphics file type (bmp, png, jpg, tif, etc.) is now remembered between sessions. This information is stored in DC_Command.ini in the lines SaveImage and SaveImageIndex. If the two settings don't match, SaveImageIndex takes precedence.
- When saving image files from the same drawing, the last-used render type (wireframe, hidden, smooth) is remembered for as long as that drawing remains open. This information is not stored between sessions.